

NEIGHBOURHOOD PROFILE

(Based on Statistics Canada Census Dissemination Areas)

Total Population (Projection):
1903

Average Household Size (Projection):
1.80

Median Age of Population (Projection):
35.20

Average Household Income (Projection):
\$69,802.14

Share of Census Families with Children (%Projection):
31.22%

Total Number of Households (Projection):
1060



ELLICOTT REALTY BROKREAGE PRESENTS

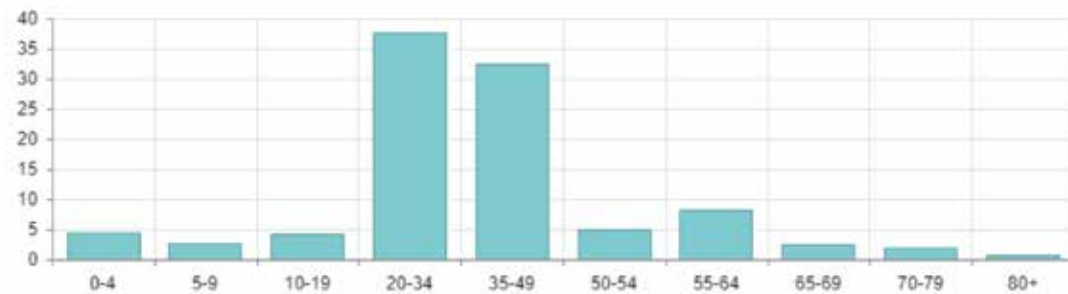
4646 DUFFERIN STREET

NORTH YORK

FOR LEASE



Share of Population by Age (% Projection)



Share of Population (Aged 25-64) by Educational Attainment (Projection)



University Certificate, Diploma Or Degree At Bachelor Level Or Above	46.68%
College, CEGEP Or Other Non-University Certificate Or Diploma	24.90%
High School Diploma Or Equivalent	17.50%
University Certificate Or Diploma Below Bachelor Level	6.22%
Apprenticeship Or Trades Certificate Or Diploma	4.01%
No Certificate, Diploma Or Degree	0.69%

Share of Labour Force Population (Aged 15+) by Occupation



Business Finance Administration	20.26%
Occupations In Sales And Service	17.34%
Occupations In Social Science, Education, Government, Religion	15.24%
Occupations In Sciences	12.88%
Occupations In Art, Culture, Recreation, Sport	9.89%
Occupations In Health	8.67%
Occupations In Trades, Transport, Operators	7.37%
Management	7.05%
Occupations Unique To Manufacture And Utilities	1.30%
Occupations Unique To Primary Industries	0.00%

PROPERTY DETAILS

PROPERTY TYPE:
Industrial or Medical

SIZE:

Office: Built out: 4,106 sq.ft.
Industrial + 32,908 sq.ft.

Total: 37,014 sq. ft.

PARKING:

300 parking spaces available



JOHN RUMBOLDT
Sales Representative



ELLICOTT REALTY INC.

Direct: 905.751.3449 | Office: 416.203.7447
Johnr@ellicottrealty.ca

PAT JANKOWSKI
Sales Representative

Direct: 647.838.8817 | Office: 416.203.7447
Patj@ellicottrealty.ca

JOHN RUMBOLDT
Sales Representative



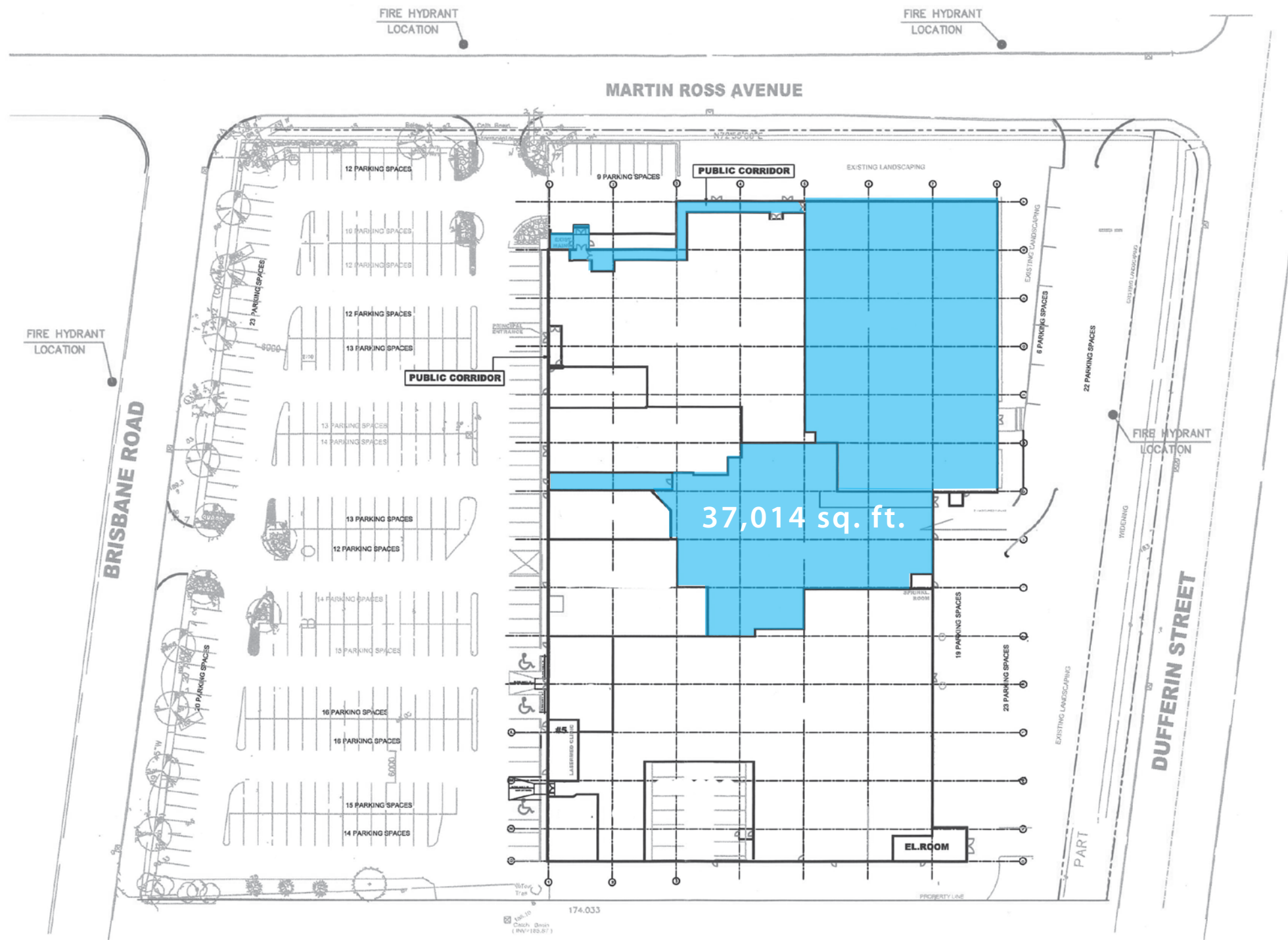
ELLICOTT REALTY INC.

Direct: 905.751.3449 | Office: 416.203.7447
Johnr@ellicottrealty.ca

PAT JANKOWSKI
Sales Representative

Direct: 647.838.8817 | Office: 416.203.7447
Patj@ellicottrealty.ca

WELCOME TO 4646 DUFFERIN STREET | FLOORPLANS



REFERENCE SITE PLAN
SCALE 1:400

PROJECT NORTH	TRUE NORTH
NO.	ISSUED
BY	DATE

NO.	REVISED	BY	DATE

GLUCK PARTNERSHIP ARCHITECTS INC.
 156 DUNCAN MILL ROAD, SUITE 5
 TORONTO, ONTARIO, M9B 3N2
 TEL: 416-493-0291

4646 DUFFERIN STREET

SITE PLAN

	DRAWN: JCC
	CHECKED: TG
	SCALE: 1:400
	DATE: 12 OCTOBER 2018
	PROJECT NO. THOMAS GLUCK LICENCE 2845
A-1.0	